



# WYOMING BUSINESS COUNCIL

## IMPACT PORTFOLIO:

### NORTHWEST REGION

This portfolio serves as a comprehensive record of economic progress and state investment within the **Northwest**. By combining local county snapshots and specific project profiles with our formal report to the Management Audit Committee, we aim to provide the **Team of Thousands** with a transparent, data-driven look at how we are strengthening our communities together. Inside, you will find the measurable results of our shared mission to build a Wyoming where businesses compete, families stay whole, and our local economies thrive.

G  
N  
I  
M  
U  
Y  
M



# WBC: DELIVERING LOCAL IMPACT

## A Regional Activity Review | July 2024 – December 2025<sup>1</sup>

The Wyoming Business Council (WBC), in strategic partnership with the **Wyoming Small Business Development Center (SBDC)**, **Manufacturing Works (MW)**, and the **Wyoming Women's Business Center (WWBC)**, continually deploys state resources to foster a more diversified and resilient economy across all six regions of Wyoming.

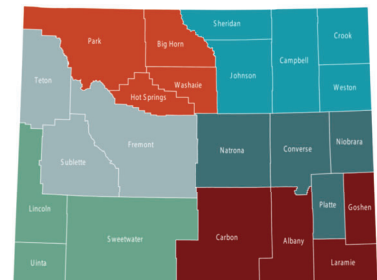
Sustainable community growth is fundamentally dependent upon **robust business services and support**. A community cannot truly thrive unless its local businesses – the job creators and tax base – are nurtured, supported, and prepared for expansion.

This summary is a sample of our targeted leadership and investments across three critical, interconnected pillars: **Business Support**, **Community Development**, and **Infrastructure Improvements**.

### BOOTS-ON-THE-GROUND LEADERSHIP

Our **Regional Directors** serve as the catalysts for community-led action, providing the essential coaching, connections, and strategic support necessary for economic growth. They are the **direct connection** between state strategy and local economies, engaging in:

- Economic development education and training
- Business Retention and Expansion (BRE) support
- Strategic planning and implementation
- Local business advocacy and partnership facilitation



### ACRONYMS IN THIS REPORT

<b>A2A</b>	Assessment to Action	<b>MEG</b>	Market Expansion Grant
<b>BRC</b>	Business Ready Community Grant & Loan Program	<b>SBDC</b>	Wyoming Small Business Development Center
<b>BRE</b>	Business Retention and Expansion	<b>SBIR</b>	Small Business Innovation Research Matching Grant
<b>CPF</b>	Capital Projects Fund (Broadband)	<b>STEP</b>	State Trade and Expansion Program
<b>MW</b>	Manufacturing Works	<b>WYVC</b>	Wyoming Venture Capital

<sup>1</sup> **Accountability & Partnership**

*This regional data serves as an "ecosystem map" highlighting a sample of where and how state resources are being strategically injected to generate economic returns in Wyoming communities. By organizing our efforts locally, the WBC ensures that state programs are relevant, accountable, and provide a unique developmental focus tailored to the needs of communities, businesses, and individuals.*

## NORTHWEST REGION (Big Horn, Hot Springs, Park, Washakie)

*Strategic Focus: Tourism infrastructure, manufacturing diversification, and strategic community planning. WBC Regional Director: Kristin Fong, [kristin.fong@wyo.gov](mailto:kristin.fong@wyo.gov)*

AREA OF IMPACT	KEY EFFORTS & PROGRAMS
<b>Business Services</b>	Challenge Loans: <ul style="list-style-type: none"> <li>• <b>Basin</b> - Basin Processing</li> <li>• <b>Cody</b> - True North Academy</li> </ul> Kickstart: Point Blank Tech ( <b>Cody</b> ) MEG: <ul style="list-style-type: none"> <li>• <b>Cody</b> - Deer Creek Wildlife</li> <li>• <b>Powell</b> - ASHBRO LLC</li> <li>• <b>Powell</b> - Sew Much More LLC</li> <li>• <b>Cody</b> - Wyoming Authentic Products</li> </ul> STEP: Gunwerks & Wyoming Authentic Products ( <b>Cody</b> )
<b>Community Growth &amp; Infrastructure</b>	BRC planning projects: <ul style="list-style-type: none"> <li>• <b>Burlington Economic Development Plan</b></li> <li>• <b>Washakie Co. Economic Development Master Plan</b></li> </ul> InSite industrial site analysis & planning: <b>Powell</b> Recruiting: Project Copperhead ( <b>Cody</b> )
<b>Broadband</b>	CPF (BHT Holdings/TCT): <b>Lovell, Cowley, Cody &amp; rural Powell</b> Connect Wyoming CARES: <b>Basin, Cody, Greybull/Shell, Otto, Powell &amp; Cowley</b> (TCT & Charter)
<b>Capacity Building</b>	A2A: <b>Burlington, Greybull, Lovell &amp; Thermopolis</b> BRE Training/Support: <b>Thermopolis Chamber &amp; Forward Cody</b> Fishbone & Barriers to Growth coaching: <b>Burlington Economic Development Committee &amp; Meeteetse Strategic Doing</b> Leadership Training Scholarships: <b>Forward Cody</b> Main Street Support: <b>Thermopolis</b> Rural Growth Initiative: <b>Lovell</b> The Wyoming Academy: <b>3 participants</b>
<b>Partner Reach</b>	<b>131 SBDC + 16 MW</b> clients regionwide



UPDATED: DECEMBER 10, 2025

# NORTHWEST REGION

## BIG HORN

### PERFORMANCE

BRC FUNDING	LOCAL MATCH FUNDING	PRIVATE INVESTMENT	JOBS CREATED	TOTAL INVESTMENT
\$8,825,453	\$4,714,625	\$818,762	95	\$14,358,840

### PROJECT PROFILES

PROJECT INFORMATION	DATE AWARDED	STATUS	BRC FUNDING	LOCAL MATCH	TOTAL PROJECT
Wyoming Call Center Infrastructure	2005	Completed	\$571,397	\$63,530	\$635,299
Airport Business Park Infrastructure	2005	Completed	\$1,496,822	\$480,774	\$1,980,774
Airport Hangar for B&G, Industries	2006	Completed	\$2,966,929	\$555,000	\$3,555,000
Cowley Main Street Enhancements	2008	Completed	\$300,000	\$680,570	\$980,570
Lovell Business Incubator Facility	2010	Completed	\$329,430	\$75,245	\$405,843
Big Horn Co Economic Development Plan	2013	Completed	\$34,270	\$12,500	\$50,000
BH Co Fairgrounds Multi-Purpose Building	2013	Completed	\$500,000	\$774,596	\$1,274,596
Lovell Camper Park Improvements	2014	Completed	\$31,695	\$33,420	\$65,115

<b>Greybull Recreation Center</b>	2014	Completed	\$293,012	\$320,000	\$640,000
<b>Cowley Recreation Complex</b>	2014	Completed	\$471,386	\$658,000	\$1,158,000
<b>Greybull Business Park Improvements</b>	2016	Completed	\$784,446	\$212,170	\$1,112,170
<b>Cowley Community Center Expansion</b>	2016	Evaluation Period	\$425,600	\$425,600	\$851,200
<b>Antelope Butte Mountain Recreation Area</b>	2018	Evaluation Period	\$183,771	\$46,400	\$232,000
<b>Greybull Business Park Phase II</b>	2020	Evaluation Period	\$396,695	\$376,820	\$976,820
<b>Burlington Economic Development Plan</b>	2025	In-Progress	\$40,000	\$0.00	\$53,334



UPDATED: FEBRUARY 9, 2026

# BIG HORN COUNTY ACTIVITY & IMPACT SNAPSHOT

## STRENGTHENING COMMUNITIES, REMOVING BARRIERS, AND PRESERVING OPPORTUNITIES TO PUT DOWN ROOTS

In Big Horn County, the Wyoming Business Council (WBC) doesn't just fund projects; we invest in the ingenuity and resilience that define the region. From growing businesses in Greybull to the small-town main streets of Basin, Burlington, and Lovell, we work hand-in-hand with mayors, commissioners, and local entrepreneurs - providing technical expertise, community connections, and strategic funding that empowers the private sector to lead.

Our goal is simple: to ensure Big Horn County remains a place where businesses can grow, families can put down roots, and the next generation can build a future worth staying for. Learn more about our recent work in Big Horn County across the three major areas of impact below.

**For a deeper dive into projects and services in Big Horn County, reach out to WBC Northwest Regional Director Kristin Fong ([kristin.fong@wyo.gov](mailto:kristin.fong@wyo.gov) || 307-271-2619) or review the full [Northwest Regional Profile](#).**

## STATEWIDE ECONOMIC IMPACT SNAPSHOT

**WYOMING BUSINESS COUNCIL: BIG RETURNS FOR WYOMING**  
**\$1 INVESTED = \$25 RETURN & \$.65 IN TAX REVENUE\***



BRC + WYVC  
INVESTMENT

**\$83  
MILLION**



PROJECTED  
IMPACT

**\$2+  
BILLION**



TAX  
GENERATION

**\$54  
MILLION**



JOB  
CREATION

**2,700+  
JOBS  
PROJECTED**



\*Business Ready Community (BRC) & Wyoming Venture Capital (WYVC) impact data 2021 to 2025. Data presented is an estimate calculated by a third party. **For more information:** [wbc.pub/TOT\\_Resources](http://wbc.pub/TOT_Resources)

# BUILDING STRONG COMMUNITIES

## PROVIDING THE "MUST-HAVES" FOR GROWTH

**Summary:** The WBC helps fix the "basics," so the private sector can do the rest. When towns have reliable infrastructure like water, power, roads, and shovel-ready sites, employers can move faster and invest with confidence.

- **20+ Years of Infrastructure Investments:** Through the Business Ready Community (BRC) grant and loan program, the WBC has supported 15 local projects with nearly \$9 million in state funding. These investments leveraged an additional \$5.5 million in local and private dollars, creating nearly 95 new jobs and supporting hundreds more.
- **Building Big Horn's Future:** The Wyoming Business Council partnered with the Town of Greybull to advance Phase II of the Greybull Business Park, helping fund infrastructure improvements and make nearly 30 acres of commercial property development-ready. This expansion builds on the success of Phase I, supports private investment, attracts new businesses, and creates jobs - strengthening Big Horn County's long-term economic growth.
- **Strategic Development:** Through the [Assessment to Action](#) (A2A) program, the WBC worked with Big Horn County leaders to develop a shared strategy for growth. By identifying industry gaps, evaluating local opportunities, and fostering collaboration among city officials, the Chamber, local business leaders, and national parks, the WBC guided the county in implementing initiatives that strengthen the visitor economy and generate lasting economic impact for the region.
- **Broadband Expansion:** The WBC helped to direct \$4.2 million dollars in federal funding to improve internet connectivity in Big Horn County for 3,326 homes or businesses.
- **Dive Deeper: Dive Deeper:** find more details about the last 20+ years of state investment in Big Horn County in [BRC Northwest Region Project Profile](#).

## SPOTLIGHT: LEADERS UNLOCK OPPORTUNITIES THROUGH A2A

In 2025, leaders in Lovell, Greybull, and Burlington used the Wyoming Business Council's Assessment to Action (A2A) program to tackle local barriers slowing economic growth. While each community faced different challenges, A2A helped leaders align partners, identify root issues, and move from discussion to action.

In Lovell, the focus was on strengthening coordination and infrastructure to better support tourism growth. Greybull used A2A to confront housing shortages that were limiting workforce and business expansion. In Burlington, leaders prioritized business retention and housing, using the process to clarify needs and guide long-term decision-making.



*"Each community is coming from a different scenario with different obstacles, but the initial framework was useful to all of us."* - **Cameron Miller, Bank of Lovell**

Together, these communities demonstrate how A2A provides a flexible framework - helping local leaders unlock solutions tailored to their community's needs.

# HELPING BUSINESSES COMPETE & GROW

## EMPOWERING INNOVATION, GROWING SMALL BUSINESSES, AND EXPANDING MARKET REACH

**Summary:** The WBC helps clear the path so Wyoming businesses can win. Our support helps connect entrepreneurs with the right financing, tools, and partners to start, grow, buy, or expand Wyoming-owned companies.

- **Spurring on Market Expansion:** Using our [Market Expansion Grant](#) (MEG), we help Wyoming companies overcome obstacles that limit their ability to sell goods and services beyond the state. These marketing grants are helping local businesses bring in dollars from other U.S. states and countries to the local economy. For example, with a small grant, RYT participated in SHOT Show, putting a Wyoming-made product in front of a global audience and driving new revenue back home.
- **Fueling Small Business:** Our partners at the [Small Business Development Center](#) (funded by the WBC), have helped 107 clients with over 625 hours of advising across Big Horn County resulting in 10 new businesses - including Bob's Diner & Bakery in Greybull, a locally owned business that has grown into a community gathering place.
- **The Startup Spark:** Through innovation-focused programs like [Kickstart](#) and the [SBIR Matching Grant Program](#), the WBC helps local entrepreneurs turn proven ideas into growing companies. In Big Horn County, the WBC provided a \$100,000 SBIR matching grant to a business that had already secured \$750,000 in federal R&D funding. While federal dollars cover research, the state investment filled critical gaps for marketing and commercialization - helping a nationally vetted innovation move from lab to market and maximize its economic impact in Wyoming.

### SPOTLIGHT: BOB'S DINER AND BAKERY

Opened in 2020 by Robert and Deanna Skillman, Bob's Diner & Bakery has become a community anchor in Greybull - supporting local jobs, drawing visitors, and serving as a gathering place for residents. They reinvest in local artists, charities, and contribute to the county's economic vitality. With support from the Wyoming Small Business Development Center (funded by WBC), the Skillmans received critical guidance in business and financial planning that helped make their business sustainable and grow.



Proven to keep downtown Greybull vibrant and the community connected, Bob's Diner & Bakery has earned statewide recognition as the 2025 Spirit of Wyoming Award winner and drawn attention beyond the region with a feature on *America's Best Restaurants*. Their success shows the impact of WBC-supported small business assistance in helping Wyoming businesses thrive.

# HELPING FAMILIES THRIVE & STAY TOGETHER

## CREATING A FUTURE WORTH STAYING FOR

**Summary:** Economic development is about people, not just numbers. The WBC works closely with local leaders and agency partners to create the conditions for high-quality careers and strong communities so families can build their lives here for generations.

- **Recreation That Fuels Local Economies:** Antelope Butte Mountain Recreation Area is a powerful example of how targeted investment can revitalize a rural community. With support from the WBC through BRC funding, Antelope Butte added a magic carpet lift - allowing the nonprofit to focus more fully on its mission of affordable, inclusive outdoor recreation. Read more about the [asset](#) that's helping communities thrive.
- **Preserving Local Business:** The WBC's [Challenge Loans](#) help the next generation of entrepreneurs step up - partnering with local banks to expand operations or buy out retiring owners - ensuring Wyoming businesses continue to thrive. Basin Processing, a custom meat processing facility in Basin, Wyoming, has served the Big Horn Basin for more than 30 years with a strong reputation for quality and customer service. With support from a WBC Challenge Loan, the business successfully transitioned ownership, preserving local jobs, supporting area agricultural producers, and keeping essential services rooted in the community.
- **Local Solutions, Stronger Homes, Lasting Impact:** In Greybull and Basin, community-led efforts like the [Bright Block Initiative](#), are helping families stay and thrive. By partnering with their local chapter of [Habitat for Humanity](#), communities are expanding affordable housing, rehabilitating homes, and strengthening neighborhoods, supporting workforce stability and quality of life in Wyoming. All made possible by support from the WBC.

## WBC: A PARTNER IN EVERY CORNER OF WYOMING

Everything we do—from sewer and utility upgrades to small-business support—is meant to remove the roadblocks that keep Big Horn County from growing. We help partners clear the way so employers can invest, families can find opportunity, and the next generation can build their Wyoming dream close to home.

**Dive Deeper:** Learn more about the Wyoming Business Council and our work in Big Horn County and the other 22 counties across the state at [www.wyomingbusiness.org](http://www.wyomingbusiness.org).



# PARK

## PERFORMANCE

BRC FUNDING	LOCAL MATCH FUNDING	PRIVATE INVESTMENT	JOBS CREATED	TOTAL INVESTMENT
\$24,969,966	\$14,381,726	\$19,822,363	317	\$56,174,055

## PROJECT PROFILES

PROJECT INFORMATION	DATE AWARDED	STATUS	BRC FUNDING	LOCAL MATCH	TOTAL PROJECT
<b>Water Electric (Fremont Motors and others)</b>	2004	Completed	\$133,718	\$10,413	\$208,255
<b>Infrastructure for Watertower West Development</b>	2004	Completed	\$228,546	\$12,029	\$240,575
<b>Infrastructure for Airport Business Park</b>	2005	Completed	\$1,500,000	\$2,329,894	\$3,829,894
<b>Infrastructure for Gateway West Commercial Park</b>	2005	Completed	\$1,500,000	\$181,376	\$1,681,376
<b>Infrastructure for Homestead Industrial Park</b>	2006	Completed	\$1,297,978	\$206,566	\$1,706,566
<b>Infrastructure for Light Industrial Park</b>	2007	Completed	\$3,000,000	\$1,552,720	\$4,552,720
<b>Sleeping Giant Ski Area</b>	2009	Completed	\$500,000	\$766,697	\$1,266,697
<b>Gluten Free Oats Expansion</b>	2010	Completed	\$450,000	\$50,000	\$500,000
<b>Cody Light Manufacturing Building</b>	2010	Completed	\$727,778	\$81,135	\$811,358
<b>Eleutian Tech Corporate Headquarters</b>	2010	Completed	\$2,998,599	\$332,500	\$3,331,099
<b>Gluten Free Oats Expansion - additional funding request</b>	2011	Completed	\$267,795	\$29,755	\$297,550

<b>Rodeo Ground Improvements</b>	2011	Completed	\$43,886	\$54,617	\$98,503
<b>Cody Laboratories Expansion - Warehouse Facility</b>	2012	Completed	\$2,531,424	\$1,494,536	\$4,025,960
<b>Cody Stampede Revitalization</b>	2012	Completed	\$242,452	\$242,450	\$484,901
<b>Wyoming Authentic Products Processing Facility</b>	2012	Completed	\$1,223,178	\$135,908	\$1,359,086
<b>George Farms Value Added Dairy Feasibility Study</b>	2013	Completed	\$25,000	\$26,835	\$51,835
<b>Gunsmithing School Feasibility Study</b>	2013	Completed	\$24,046	\$30,400	\$55,400
<b>Riley Ice Arena Spectator</b>	2013	Completed	\$46,180	\$46,180	\$92,360
<b>Gluten Free Oats Phase II Build Oat</b>	2014	Completed	\$946,404	\$105,156	\$1,051,560
<b>Park County Fairgrounds Improvements</b>	2014	Completed	\$387,040	\$2,614,609	\$3,100,000
<b>Cody Mentock Park Universally Accessible Playground</b>	2016	Evaluation Period	\$145,943	\$260,000	\$410,200
<b>Gunwerks Manufacturing Facility (Grant)</b>	2018	Evaluation Period	\$3,000,000	\$3,265,000	\$6,265,000
<b>Gunwerks Manufacturing Facility (Loan)</b>	2018	Evaluation Period	\$3,000,000		
<b>Meeteetse JPB Rec District Community Center</b>	2023	In-Progress	\$750,000	\$552,750	\$1,302,750



UPDATED: JANUARY 30, 2026

# PARK COUNTY

## ACTIVITY & IMPACT SNAPSHOT

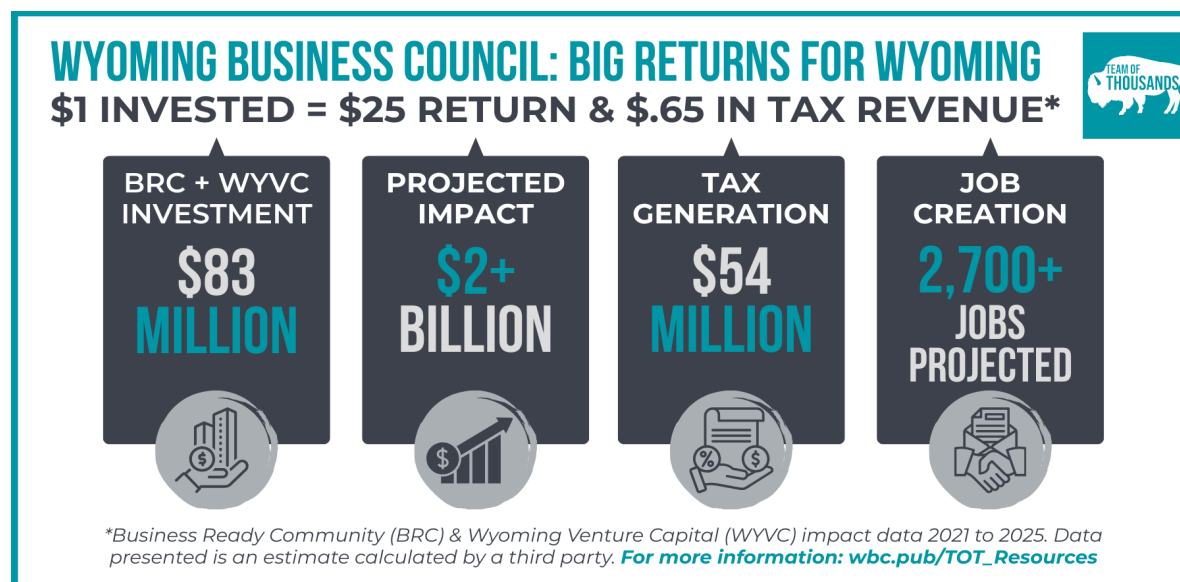
### MAKING CONNECTIONS & POWERING LOCAL INGENUITY TO GROW OPPORTUNITIES CLOSE TO HOME

In Park County, the Wyoming Business Council (WBC) doesn't just fund projects; we invest in the local ingenuity that defines the Northwest region. From the precision manufacturing shops in Cody to the small-town feel of Powell and Meeteetse, we work alongside local mayors, commissioners, and business owners to provide the tools – technical expertise, local connections, and strategic funding – that allow the private sector to lead.

Our goal is simple: to make sure Park County remains a place where entrepreneurs can start, families can grow, and the next generation can thrive. Learn more about our recent work in Park County across the three major areas of impact below.

**For a deeper dive into projects and services in Park County, reach out to WBC Northwest Regional Director [Kristin Fong](mailto:kristin.fong@wyo.gov) ([kristin.fong@wyo.gov](mailto:kristin.fong@wyo.gov)) || 307-271-2619 or review the [Northwest Regional Profile](#).**

## STATEWIDE ECONOMIC IMPACT SNAPSHOT



# BUILDING STRONG COMMUNITIES

## PROVIDING THE "MUST-HAVES" FOR GROWTH

**Summary:** The WBC helps fix the "basics," so the private sector can do the rest. When towns have reliable infrastructure like water, power, roads, and shovel-ready sites, employers can move faster and invest with confidence.

- **20+ Years of Infrastructure Investments:** Since 2004, the Business Ready Community (BRC) grant and loan program has supported 24 local projects with nearly \$25 million in state funding. This sparked an additional \$34 million in local and private investment, driving significant economic growth in the area and creating 314 new jobs.
- **Improving Broadband Access:** The WBC helped to direct more than \$65.5 million in federal funding to improve internet connectivity for 5,733 homes or businesses.
- **Ready for Business:** By investing in "ready-to-go" sites like the Homestead Business Park and Gateway West Commercial Park in Powell, and the North Cody Light Industrial Park, we've enabled homegrown companies like Gunwerks, Gluten Free Oats, and Eleutian Technology to expand right here at home rather than moving out of state.
- **Dive Deeper:** find more details about the last 20+ years of state investment in Park County in [the BRC Northwest Region Project Profile](#).

# HELPING BUSINESSES COMPETE & GROW

## LEVELING THE PLAYING FIELD FOR LOCAL INGENUITY

**Summary:** The WBC helps clear the path so Wyoming businesses can win. Our support helps connect entrepreneurs with the right financing, tools, and partners to start, grow, buy, or expand Wyoming-owned companies.

- **Winning New Industry:** We provided strategy and consultation for local innovators, including specialized site readiness visits to the Powell Airport Industrial Site to prepare for future tech and high-end manufacturing growth.
- **Spurring on Market Expansion:** Using our [Market Expansion Grant](#) (MEG), we continue to support Wyoming companies in removing the roadblocks restricting them from selling their goods and services outside of Wyoming. These marketing grants are helping local businesses bring in dollars from other U.S. states and countries to the local economy. For example, with a small grant, Sew Much More, LLC was able to reach new buyers in Alaska, bringing out-of-state dollars back to the Park County economy.
- **The Startup Spark:** Using our innovation-focused programs like [Kickstart](#) and [SBIR Matching Grant Program](#), the WBC has provided grants to seven local entrepreneurs to turn their bold ideas into real companies. Additionally, our partners at the [Small Business Development Center](#) (funded by the WBC), have helped 309 clients across Park County from 2021-2025 to start up and grow.

## SPOTLIGHT: POINT BLANK TECH

Branden Christiansen had an idea he couldn't let go: a precision electronic bipod for long-range shooting. With WBC support, Cody-based Point Blank Tech transitioned from a home-based prototype to a scalable business.

*"The Wyoming Business Council supported me through the Market Expansion Grant, which allowed me to attend the SHOT Show under a Wyoming-sponsored booth. That opportunity directly led to partnerships with industry-leading companies who are now helping me market, distribute, and sell my product globally under their established brands – providing credibility and reach that would have been impossible for a startup to secure alone."*  
– **Brandon Christiansen, Founder & CEO - Pilot, Engineer, and Product Inventor**



## HELPING FAMILIES THRIVE & STAY TOGETHER

### CREATING A FUTURE WORTH STAYING FOR

Economic development is ultimately about people – ensuring we have the services and gathering places that make a house a home.

- **Community Heart:** WBC supported the Meeteetse Community Center, which serves as a vital hub for recreation, workforce-enabling access to childcare, and connection, proving that economic health starts with community well-being.
- **Partnering for the Future:** We connected the Park 6 School District with the Wyoming Business Alliance to create a direct link between our classrooms and key industries. This partnership ensures our students are training for the high-quality jobs available right here in Park County, keeping our best talent at home.
- **Supporting Working Parents:** We provided a [Challenge Loan](#) to support the expansion of True North Academy in Cody. By increasing local childcare slots, we removed a major barrier that often prevents parents from entering the workforce or starting their own businesses.
- **Developing Future Leaders:** We don't just invest in buildings; we invest in brains. Through scholarships for Elevate Cody and the MIT Entrepreneurship Program, we are giving Park County leaders the world-class skills they need to navigate a changing economy.

## WBC: A PARTNER IN EVERY CORNER OF WYOMING

Everything we do—from sewer and utility upgrades to small-business support—is meant to remove the roadblocks that keep Park County from growing. We help partners clear the way so employers can invest, families can find opportunity, and the next generation can build their Wyoming dream close to home.

**Dive Deeper:** Learn more about the Wyoming Business Council and our work in Park County and the other 22 counties across the state at [www.wyomingbusiness.org](http://www.wyomingbusiness.org).

# HOT SPRINGS

## PERFORMANCE

BRC FUNDING	LOCAL MATCH FUNDING	PRIVATE INVESTMENT	JOBS CREATED	TOTAL INVESTMENT
\$4,431,601	\$698,659	\$0.00	16	\$5,130,260

## PROJECT PROFILES

PROJECT INFORMATION	DATE AWARDED	STATUS	BRC FUNDING	LOCAL MATCH	TOTAL PROJECT
CAPTEL Building	2005	Completed	\$414,000	\$121,000	\$535,000
Red Rocks Business Park Phase I-II	2007	Completed	\$2,689,706	\$338,082	\$3,338,082
Hot Springs County Reuse of Abandoned Airport Property	2024	In-Progress	\$1,327,895	\$239,577	\$2,445,774

# WASHAKIE

## PERFORMANCE

BRC FUNDING	LOCAL MATCH FUNDING	PRIVATE INVESTMENT	JOBS CREATED	TOTAL INVESTMENT
\$3,005,679	\$3,099,062	\$65,000	1	\$6,169,741

## PROJECT PROFILES

PROJECT INFORMATION	DATE AWARDED	STATUS	BRC FUNDING	LOCAL MATCH	TOTAL PROJECT
Industrial Road for North Worland Industrial Area (multiple)	2004	Completed	\$394,553	\$433,650	\$828,203
Fair View Industrial Park	2010	Completed	\$1,417,619	\$215,126	\$2,141,259
Fair View Industrial Park Spec Building	2012	Completed	\$618,507	\$109,149	\$727,656
Washakie County Library & Economic Development Project	2020	Evaluation Period	\$500,000	\$2,341,137	\$2,841,137
Washakie County Economic Development Master Plan	2025	In-Progress	\$75,000	\$0.00	\$100,000



UPDATED: FEBRUARY 9, 2026

# HOT SPRINGS AND WASHAKIE COUNTY ACTIVITY & IMPACT SNAPSHOT

## INCREASING COMMUNITY CAPACITY & ALIGNING FOR GROWTH

The Wyoming Business Council (WBC) partners with Hot Springs and Washakie County to strengthen the foundations that support long-term economic growth. We work alongside local elected officials, community leaders, and business owners to provide the “must-haves”—from reliable infrastructure and broadband to small-business support—so the private sector can invest with confidence. The WBC helps Hot Springs and Washakie County support existing businesses, encourage entrepreneurship, and build a future that works for residents and employers alike.

At the end of the day, the WBC’s goal is to help make the next step possible, so local leaders and private industry can take it from there. Learn more about our recent work in Hot Springs and Washakie County across the three major areas of impact below.

**For a deeper dive into projects and services in Hot Springs and Washakie County, reach out to WBC Northwest Regional Director Kristin Fong ([kristin.fong@wyo.gov](mailto:kristin.fong@wyo.gov) || 307-271-2619) or review the full [Northwest Regional Profile](#).**

## STATEWIDE ECONOMIC IMPACT SNAPSHOT

**WYOMING BUSINESS COUNCIL: BIG RETURNS FOR WYOMING**  
**\$1 INVESTED = \$25 RETURN & \$.65 IN TAX REVENUE\***



BRC + WYVC  
INVESTMENT

**\$83  
MILLION**



PROJECTED  
IMPACT

**\$2+  
BILLION**



TAX  
GENERATION

**\$54  
MILLION**



JOB  
CREATION

**2,700+  
JOBS  
PROJECTED**



\*Business Ready Community (BRC) & Wyoming Venture Capital (WYVC) impact data 2021 to 2025. Data presented is an estimate calculated by a third party. [For more information: wbc.pub/TOT\\_Resources](#)

# BUILDING STRONG COMMUNITIES

## PROVIDING THE "MUST-HAVES" FOR GROWTH

**Summary:** The WBC helps fix the "basics," so the private sector can do the rest. When towns have reliable infrastructure like water, power, roads, and shovel-ready sites, employers can move faster and invest with confidence.

- **20+ Years of Infrastructure Investments:** Through the BRC program, \$7.4 million in state funding, matched by another \$3.7 million in local and private investment, has supported critical community projects in both counties that improve infrastructure and site readiness. Investments like this are helping position the former airport property in Hot Springs County, now rebranded as [The Overlook at Roundtop](#), for adaptive reuse, opening the door for future development that benefits residents and visitors alike
- **Broadband:** The WBC facilitated over \$11.4 million in federal funding to expand internet connectivity to 20% of homes and businesses across Hot Springs and Washakie Counties.
- **Dive Deeper:** Find more details about the last 20+ years of state investment in Hot Springs and Washakie County in [BRC Northwest Region Project Profile](#).

## SPOTLIGHT: FROM COMMUNITY INPUT TO COORDINATED ACTION

Through the Assessment to Action (A2A) program, Thermopolis brought partners together to align around a shared community vision and clear economic priorities. A community-wide visioning survey helped identify business retention and expansion needs, which were addressed through a strategic planning session with the WBC Regional Director. That work is now evolving into a living strategic plan - one that's actively guiding the efforts of the community's newly reorganized economic development organization, [Thrive Thermopolis](#). The result is stronger collaboration, clearer priorities, and a coordinated path forward for supporting local businesses and long-term growth.



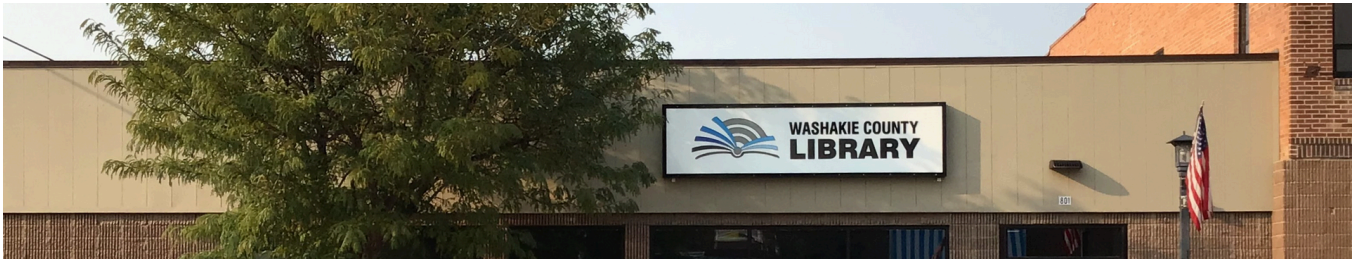
## HELPING BUSINESSES COMPETE & GROW

### CONNECTING BUSINESSES TO FINANCING, EXPERTISE, AND OPPORTUNITY

**Summary:** The WBC helps clear the path so Wyoming businesses can win. Our support helps connect entrepreneurs with the right financing, tools, and partners to start, grow, buy, or expand Wyoming-owned companies.

- **Fueling Small Business:** Our partners at the [Small Business Development Center](#) (funded by the WBC), have helped 69 clients with over 200 hours of advising across Hot Springs and Washakie County.

## SPOTLIGHT: WASHAKIE COUNTY LIBRARY



Using BRC funding, the relocation of the Washakie County Library to its prominent Main Street location is serving as a catalyst for growth and revitalization in their historic downtown. By transforming a central anchor into a high-traffic destination, the library is doing more than just housing books - it's creating a consistent "foot-traffic engine" that local entrepreneurs can't ignore. As families and professionals flocked to the new facility, a ripple effect is taking hold: storefronts are beginning to fill with locally-owned boutique shops and service-based businesses, all eager to cater to the library's diverse patrons. This strategic placement is turning a once quiet corridor into a thriving social and economic hub, proving that public investment in community space is one of the most effective tools for revitalization.

## HELPING FAMILIES THRIVE & STAY TOGETHER

### CREATING A FUTURE WORTH STAYING FOR

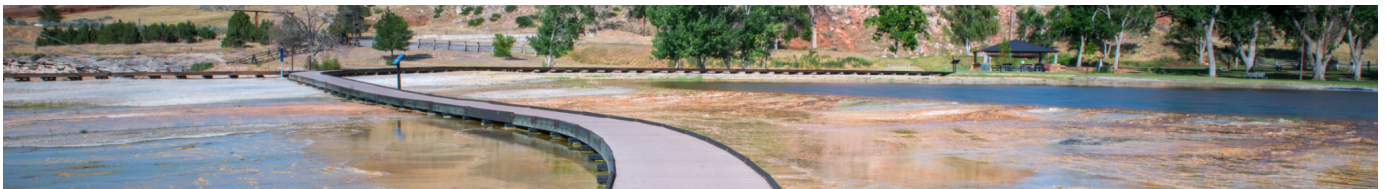
**Summary:** Economic development is about people, not just numbers. The WBC works closely with local leaders and agency partners to create the conditions for high-quality careers and strong communities so families can build their lives here for generations.

- **Supporting Working Parents:** Working closely with the [Wyoming Community Foundation](#) and other leaders across the state, we've been able to facilitate over \$22,000 in startup grants to 3 local childcare centers, helping families go to work knowing their children are in a safe, local environment.

### WBC: A PARTNER IN EVERY CORNER OF WYOMING

Everything we do – from sewer and utility upgrades to small-business support – is meant to remove the roadblocks that keep Hot Springs and Washakie County from growing. We help partners clear the way so employers can invest, families can find opportunity, and the next generation can build their Wyoming dream close to home.

**Dive Deeper:** Learn more about the Wyoming Business Council and our work in Hot Springs and Washakie Counties and the other 21 counties across the state at [www.wyomingbusiness.org](http://www.wyomingbusiness.org).





OCTOBER 2025

# WYOMING BUSINESS COUNCIL MANAGEMENT AUDIT COMMITTEE INVESTMENTS REPORT

# CATALYZING ECONOMIC RETURN THROUGH STRATEGIC INVESTMENT AND RIGOROUS ACCOUNTABILITY

The Wyoming Business Council's (WBC) diverse suite of investment programs – spanning infrastructure development, business financing, and startup support – demonstrates a unified, data-driven commitment to catalyzing economic growth and leveraging outside capital while maintaining rigorous accountability across all state investments. We actively cultivate Wyoming's physical and financial ecosystems, unlocking job creation, job retention, increased wages, and private and federal dollars.

We proudly embrace our role as optimistic architects of Wyoming's future. Our core mission is to cultivate a resilient and prosperous economic landscape that empowers every community across our great state. We believe Wyoming's potential is boundless, and our role is to provide the strategic public investments, partnerships, and support necessary to unlock it. This report provides a comprehensive overview of five key investment programs that form the investment tools of our strategy. It illustrates our data-driven and collaborative approach to turning challenges into monumental opportunities, building a stronger, more diverse economy for generations to come, and a measurable return on public dollars.

The following sections detail each of our core programs, from the foundational, publicly owned infrastructure investments of the Business Ready Community (BRC) program to the high-growth potential of the Wyoming Venture Capital (WYVC) fund. Each program is designed to meet a specific need within Wyoming's economic ecosystem, and, together, they create a powerful and catalytic continuum of support for communities, existing businesses, and innovative startups. This report showcases how these programs collectively help to develop a robust environment for Wyoming's economy to grow.

As we look to the horizon, we do so with determination and a clear vision. The analysis that follows is not just a summary of past performance but a testament to our ongoing commitment to strategic action and measurable impact. We are steadfast in our mission to design a future where every Wyoming citizen and community can thrive.

## BUSINESS READY COMMUNITY (BRC) PROGRAM: LAYING THE FOUNDATION FOR GROWTH

The [Business Ready Community](#) (BRC) program is the foundational pillar of Wyoming's economic development strategy. By investing in essential public infrastructure, we empower our cities, towns, and counties to create environments where business can flourish. These projects are not merely about construction; they

are about laying the essential groundwork upon which long-term economic growth is possible, ensuring our communities are competitive, attractive, and ready for opportunities.

The purpose of the BRC program is to provide financing for publicly owned infrastructure that serves business needs and promotes economic development. Eligible applicants include cities, towns, counties, joint powers boards, and the Northern Arapaho and Eastern Shoshone tribes. The program funds a wide range of critical projects, including water and sewer systems, roads, speculative buildings, telecommunications infrastructure, and other physical assets that support economic advancement.

### PROGRAM PERFORMANCE AND IMPACT (2021-2025)

The following table highlights the BRC program's performance and strategic impact during the past five years. \*See attached spreadsheet with a breakdown of projects during this period.

Key Metric	Value	Strategic Significance
<b>Grants Awarded</b>	\$86,003,080	Demonstrates the need for funding to address critical community infrastructure needs across the state.
<b>Loans Awarded</b>	\$20,426,288	Provides a repayable funding mechanism that helps create a small amount of recurring BRC program funding.
<b>Private Investment Leveraged</b>	\$178,501,683	Shows that our public funds act as a powerful catalyst, attracting significant private capital into Wyoming communities.
<b>Local Contribution</b>	\$14,437,963	Reflects important local buy-in and partnership, ensuring projects are aligned with community priorities and shared investment.
<b>Jobs Proposed</b>	567	Represents the direct employment opportunities these infrastructure projects are designed to support and attract.
<b>Potential Annual Economic Impact</b>	\$29,837,699	This conservative figure, based on projected jobs, projected wages, and capital expenditures, represents the lasting local return on investment.

The tangible results of these investments are evident across the state. Since 2021, the BRC program has supported the development of **450,881 square feet** of building space, the installation of **132,600 linear feet** of water and sewer infrastructure, and the preparation of **958 acres** of land for new business opportunities.

Our commitment to accountability is reflected in our rigorous evaluation and management process. Each BRC application undergoes a multi-level review that includes staff analysis, on-site visits, and a third-party economic impact analysis. The WBC Board of Directors makes recommendations before final approval is granted by the State Loan and Investment Board (SLIB), ensuring ultimate oversight by the state's elected officials. We utilize robust digital systems for transparent grant management and require comprehensive quarterly and annual reporting from all recipients to track performance and ensure public funds are stewarded responsibly.

These foundational investments in publicly owned infrastructure create the fertile ground from which businesses can grow, leading us to our next strategic focus: direct support for those very businesses.

## CHALLENGE LOAN PROGRAM: CHAMPIONING BUSINESS RESILIENCE AND CONTINUITY

As steadfast supporters for tomorrow, the Wyoming Business Council is deeply committed to the health and longevity of our existing business community. The [Challenge Loan Program](#) embodies this commitment by providing essential capital to Wyoming businesses for expansion, succession, and stability. This program is a critical tool for ensuring business continuity, retaining local jobs, expanding job opportunities, and providing a financial backstop during times of economic crisis.

### PROGRAM PERFORMANCE AND IMPACT (2022-2025)

Since July 2022, the revitalized program has demonstrated a clear impact on business resilience. Operating in partnership with **11 different Wyoming banks**, we have originated **16 loans**, including 12 for succession and four for expansion, retaining or supporting a total of **191 jobs**. As a collaborative catalyst for progress, the WBC's participation anchored deals with a total value of **\$19,934,151**. This was funded through a combination of **\$5,765,091** from the WBC, **\$8,028,724** participation from lead banks, and an additional **\$6,140,336** in other capital and loans, showcasing the power of public-private financial partnership.

The program's long-term historical performance underscores its stability and success. Since 1998, the Challenge Loan Program has achieved the following:

- **279** total loans made.
- **\$40,397,489** in state funds loaned to Wyoming businesses.
- **\$7,460,543** in interest collected, sustaining the program for future use.
- An estimated **671** jobs created or retained.

- **20** loans have been charged off over the program's history for a loan loss rate of just **3.41%**. **13** of those charge-offs were loans issued to agribusinesses as part of the Economic Disaster Loan Program, accounting for 71.5% of the total amount of charge-offs or a **2.43% loan loss rate**.

## THE ECONOMIC DISASTER LOAN PROGRAM: A CRITICAL SAFETY NET

A component of this program is the Economic Disaster Loan provision. When federal disaster funds are not available, this program serves as a critical safety net for businesses facing unforeseen hardship. Since 2000, there have been **seven Economic Disaster Declarations**, resulting in **214 loans** totaling **\$17,255,202** being disbursed to help Wyoming businesses recover and rebuild.

Program management is conducted with the highest standards of fiscal stewardship. We partner with lead banks, utilize a modern digital file system and Salesforce for contract management, and undergo a yearly audit by the Wyoming Department of Audit, Division of Banking. This robust oversight ensures the integrity and continued success of the program.

By securing the foundation of our existing businesses, we create a stable environment where new ideas can take root and flourish. This leads us to our next program, designed to ignite that very spark of innovation.

## KICKSTART GRANT PROGRAM: IGNITING ENTREPRENEURIAL INNOVATION

The [Kickstart Grant Program](#) is a testament to our proactive and adaptive approach to economic development. We believe that failure is not a dead end, but a valuable opportunity to improve. The strategic pause and 2024 relaunch of this program is a prime example of that philosophy in action. Kickstart is designed to cultivate Wyoming's next generation of entrepreneurs by providing crucial early-stage funding to help turn innovative ideas into viable businesses.

## PROGRAM EVOLUTION AND PERFORMANCE

A comparison of the program's two phases demonstrates our commitment to continuous improvement and data-driven adjustments.

Metric	2018-2020 Performance	Strategic Outcome
Companies Funded	18	Demonstrated a <b>funding gap</b> for early-stage high-growth Wyoming startups.
Companies Still Operating	10 (56%)	A survival rate that <b>significantly outperforms</b> national averages.
Venture Pipeline	N/A	<b>Served as a pipeline</b> for our broader investment strategy, with successful companies maturing to secure follow-on funding from our Wyoming Venture Capital fund.

The outcomes of this initial phase have been remarkably positive. Of the 18 companies funded, **10 (56%) remain open** as they approach or surpass the five-year mark, *a survival rate that significantly outperforms national averages*. This success validated the program's core concept and critically revealed its role as a pipeline for our broader investment strategy. Several of the most successful companies from this cohort have matured to secure Seed or Series A funding rounds, supported by investments from our Wyoming Venture Capital (WYVC) fund.

## 2024 RELAUNCH AND ENHANCEMENTS

Based on lessons learned, we relaunched the program with several key improvements:

- A predictable **quarterly application cadence**.
- Updated criteria to include **founder qualifications**, ensuring a stronger focus on the individuals driving the business.
- A public **pitch video submission** to increase awareness and share success stories.

The relaunched program has already shown strong early momentum. In the 2024-2025 period, we received **37 applications** and approved **nine (24% approval rate) to date**, awarding **\$450,000** to promising new Wyoming ventures. In our latest round for Q4 2025, we received a **record-breaking 18 applications** for Kickstart funding.

Our refined evaluation process is rigorous and multi-staged, involving an internal screening, a competitive investor pitch event, and a final Q&A to determine award amounts. Funds are dispersed from the Governor's ENDOW fund, and awardees are required to submit quarterly reports, ensuring ongoing engagement and accountability.

As these young companies mature, some will evolve to tackle complex research and development challenges, requiring a different level of support.

## SBIR MATCH GRANT PROGRAM: FUELING HIGH-TECH RESEARCH AND DEVELOPMENT

The [Small Business Innovation Research \(SBIR\) Match Grant Program](#) is a cornerstone of our long-term vision for a technologically advanced and diverse Wyoming economy. This program **strategically leverages federal research funds** to cultivate a high-tech ecosystem within the state. By matching federal SBIR/STTR grants, we empower innovative companies to conduct groundbreaking research and development, creating high-level technical jobs and supporting the growth of advanced manufacturing capabilities right here in Wyoming.

### SIGNIFICANT LEVERAGE AND IMPACT (2018-2025)

The program's performance since its launch in 2018 demonstrates a powerful return on investment for the state.

Metric	2018-2020 Performance	Strategic Outcome
Exceptional Federal Leverage	6.16:1	Our state investment of <b>\$7,687,230</b> has successfully attracted an additional <b>\$47,321,343</b> in federal SBIR/STTR grant funding into Wyoming.
High-Quality Job Creation	188	The program has directly supported the creation of <b>188 high-level, technical jobs</b> , building our state's intellectual capital.
Outstanding Company Success	93%	Participating companies show remarkable resilience and progress, with <b>93% (27 of 29) still open</b> and <b>21% (six companies) having already reached commercialization</b> – a significant achievement in the world of deep-tech innovation.

Our evaluation and management processes are designed to be both straightforward for applicants and diligent in their oversight. The process includes an application review, a formal pitch to a WBC panel, and a detailed Q&A session. We manage all grants through Salesforce and are proud to report a **100% compliance rate** on annual reporting from all open companies, underscoring our mutual commitment to accountability and success.

While grant funding is critical for R&D, the journey to commercial success often requires a different kind of financial partnership: direct equity investment.

# WYOMING VENTURE CAPITAL (WYVC): INVESTING DIRECTLY IN WYOMING’S HIGH-GROWTH FUTURE

The [Wyoming Venture Capital \(WYVC\)](#) fund was created with a bold mission: to solve the classic "chicken-and-egg" problem of venture capital in our state.<sup>1</sup> Historically, startups struggled to find local capital, and investors saw insufficient deal flow. WYVC breaks this cycle by acting as a foundational investor, proving that Wyoming is a fertile ground for high-growth companies.

We operate with a "double bottom line" approach, evaluating every deal through two critical lenses: its potential to generate venture-like financial returns and its ability to make a significant, positive impact on Wyoming's economy. To accomplish this bold mission, we have a two-pronged approach:

- 1. Invest directly in Wyoming businesses, and
- 2. Invest in other Venture Capital funds that primarily invest in Wyoming businesses.

## POWERFUL EARLY RESULTS (LAUNCHED SPRING 2023)

Since launching in the spring of 2023, WYVC has already made a transformative impact on the state's investment landscape with our first 12 investments. The program's performance metrics highlight its immediate and substantial impact.

WYVC Performance and Economic Impact	Value/Outcome
Funds Directly Invested	\$15,995,240
Private Funds Invested (Alongside or After)	\$127,736,122
Current Leverage Ratio	9:1
Potential Total Direct Economic Impact (at year 5)	\$79,382,490
Potential Total Indirect Economic Impact (at year 5)	\$25,418,192
Expected Jobs Created (at year 3)	188

The impact of our capital investments is immediately apparent in our leverage ratio of 9:1, demonstrating that **for every dollar WYVC invests, we attract nine dollars of private capital** into Wyoming companies. This momentum is further confirmed by the fact that four of our portfolio companies have already raised successful follow-on funding rounds, signaling strong growth and investor confidence.

<sup>1</sup> WYVC funding originated from the US Treasury’s State Small Business Credit Initiative (SSBCI), which allows us to invest federal funds and take an equity position in these companies.

Our investment process is comprehensive and diligent. It begins with early conversations with founders and proceeds through a multi-stage evaluation, including deep due diligence, site visits, terms negotiation, and final approval from our Investment Committee. As active partners, we often take a board-observer seat to provide strategic guidance and maintain strict oversight through quarterly reporting to the US Treasury.

The WYVC program represents the leading edge of our economic development strategy, investing directly in the companies poised to define Wyoming's future.

## **A CATALYTIC AND UNIFIED STRATEGY FOR A PROSPEROUS WYOMING**

The five programs detailed in this report are far more than a collection of individual initiatives. They function as an integrated, strategic portfolio designed to foster economic vitality at every stage of development. From laying the foundational infrastructure in our communities and ensuring the stability of our legacy small businesses to igniting the spark of new entrepreneurs and fueling the growth of high-tech, high-potential ventures, our strategy provides a comprehensive continuum of support. This integration is not merely theoretical; it is demonstrated when successful Kickstart grant recipients mature and secure follow-on equity investments through the WYVC fund, showcasing a seamless pathway from early-stage idea to high-growth enterprise.

As data-driven strategists, our work is grounded in measurable outcomes and fiscal stewardship. The millions of dollars in private capital leveraged by our investments, the hundreds of high-quality jobs created and retained, and the successful launch and expansion of innovative Wyoming companies are not just statistics; they are tangible evidence of a strategy that is working and providing a clear return on the state's investment. Each metric represents a family supported, a loved one working and remaining in Wyoming, a community strengthened, and a step forward for our state.

Our success is built on the belief that we are a collaborative catalyst for progress. We are committed to the "Team of Thousands" philosophy – the idea that building Wyoming's future is a shared responsibility among state and local governments, private industry, educational institutions, and every engaged citizen. With unwavering dedication and an optimistic vision, we will continue to partner across the state to build a vibrant, resilient, and prosperous economic future for all of Wyoming.

---

## **ATTACHMENT: BUSINESS READY COMMUNITY PROJECT DATA (2021-2025)**

BRC Projects 2021-2025

Business Ready Community (BRC) Projects 2021-2025															
County	Applicant	Project Title	Status	SLIB Meeting Date	Grant Type	Grant Award	Loan Award	De-Obligated Amount	Private Investment	Local Contribution	Annual Economic Impact	Projected Job Creation	Projected Acres Developed	Projected Water/ Sewer LF	Projected Building SF
Albany	Laramie, City of	Laramie Project Jupiter - Plenty Unlimited Inc	Withdrawn	2/2/2023	Business Committed	\$20,000,000.00	-	\$19,056,431.00	-	-	-	-	-	-	-
	Laramie, City of	WyoTech Training Expansion Grant & Loan	Awaiting Contract	4/3/2025	Business Committed	\$5,000,000.00	\$5,000,000.00	-	\$32,842,750.00	-	\$1,211,406.00	99	32	-	137,000
Big Horn	Burlington, Town of	Burlington Economic Development Plan	Construction	6/5/2025	Planning	\$40,000.00	-	-	-	\$22,500.00	-	-	-	-	-
Campbell	Campbell County	Campbell County Pronghorn Industrial Complex	Construction	4/6/2023	Community Readiness	\$2,669,450.00	-	-	-	\$593,023.00	-	-	160	11,500	-
	Wright, Town of	Wright Economic Development Plan	Construction	6/6/2024	Planning	\$100,000.00	-	-	-	\$33,333.00	-	-	-	-	-
Carbon	Sinclair, Town of	Sinclair Historic Theatre Facade	Reporting Period	6/2/2022	Community Project	\$240,000.00	-	-	-	\$60,000.00	-	-	-	-	-
	Rawlins, City of	Rawlins Economic Development Plan	Withdrawn	4/7/2022	Planning	\$50,000.00	-	\$50,000.00	-	\$16,667.00	-	-	-	-	-
Converse	Glenrock, Town of	Glenrock McGinley Mfg Expansion	Withdrawn		Business Committed	\$1,370,733.00	-	\$1,370,733.00	-	-	-	-	-	-	-
	Lander, City of	Maven Headquarters Grant & Loan	Reporting Period	4/8/2021	Business Committed	\$3,000,000.00	\$3,000,000.00	-	\$1,033,933.00	\$49,507.00	\$1,380,569.00	23	1.54	-	22,500
Fremont	Hudson, Town of	Hudson Kansas Ave Water Extension	Construction	6/2/2022	Community Readiness	\$215,513.00	-	-	-	\$33,000.00	-	20	12	1,800	-
	Shoshoni, Town of	Shoshoni Business Park Sewer Infrastructure	Reporting Period	2/3/2022	Community Readiness	\$1,583,419.00	-	\$118,342.00	-	\$83,620.00	-	50	273	9,300	5,000
	Shoshoni, Town of	Shoshoni Hotel Feasibility Study	Completed	2/3/2022	Planning	\$25,000.00	-	\$7,655.00	-	\$8,333.00	-	-	-	-	-
	Lander, City of	Lander Table Mtn. Living Infrastructure	Withdrawn	4/7/2022	Community Readiness	\$889,105.00	-	-	-	-	-	-	-	-	-
	Northern Arapaho Tribe	Wind River Indian Reservation Data Center Plan	Construction	6/6/2024	Planning	\$50,000.00	-	-	-	\$17,000.00	-	-	-	-	-
Goshen	Torrington, City of	Torrington M Lazy Heart Feed Mill	Not Approved	10/7/2021	Business Committed	-	-	-	-	-	-	-	-	-	-
Hot Springs	Hot Springs County	Hot Springs County Reuse of Abandoned Airport Property Community Readiness Project	Construction	4/4/2024	Community Readiness	\$1,327,895.00	-	-	-	\$239,577.00	-	-	105	-	-
Laramie	Laramie County	VMaccel	Completed	4/8/2021	Managed Data Center Cost Reduction	\$2,250,000.00	-	\$1,600,566.00	-	-	-	14	-	-	-
	Cheyenne, City of	Cheyenne Microsoft Project Bison	Construction	2/3/2022	Managed Data Center Cost Reduction	\$2,250,000.00	-	-	\$50,000,000.00	-	\$10,253,351.00	13	-	-	-
Natrona	Mills, City of	Mills Riverfront Property Preparation	Construction	6/3/2021	Community Readiness	\$1,919,502.00	-	-	-	\$213,278.00	-	-	10	-	-
	Bar Nunn, Town of	Bar Nunn Community Center and Town Hall	Reporting Period	2/2/2023	Community Project	\$500,000.00	-	-	-	\$7,603,778.00	-	-	-	-	21,606
	Casper-Natrona Co Economic Development Joint Powers Board	Phoslock Environmental Technologies	Reporting Period	4/6/2023	Business Committed	\$600,000.00	-	-	\$5,000,000.00	\$450,000.00	\$1,109,792.00	25	-	-	-
	Mills, City of	Mills Austin Engineering Facility Grant & Loan	Construction	10/5/2023	Business Committed	\$15,000,000.00	\$5,000,000.00	-	\$10,125,000.00	-	\$1,277,504.00	50	-	-	-
	Evansville, Town of	Mesa Solutions	Construction	10/3/2024	Business Committed	\$8,964,713.00	-	-	\$78,000,000.00	\$1,374,880.00	\$13,793,936.00	261	206	-	203,000
Park	Casper, City of	Casper North Platte Development No. 2	Construction	6/6/2024	Community Readiness	\$4,168,000.00	-	-	-	-	-	-	112	100,000	-
	Meeteetse Community Facilities Joint Powers Board	Meeteetse JPB Rec District Community Center	Reporting Period	2/2/2023	Community Project	\$750,000.00	-	-	-	\$523,717.00	-	-	-	-	6,600
	Cody, City of	Cody Wyoming Legacy Meats Grant & Loan	Withdrawn	2/2/2023	Business Committed	\$1,000,000.00	\$926,288.00	\$1,926,288.00	-	-	-	-	-	-	-
Platte	Guernsey, Town of	Guernsey Senior Center & Library Expansion	Construction	2/6/2025	Community Project	\$750,000.00	-	-	-	\$420,000.00	-	-	-	-	8,175
Sheridan	Sheridan Economic & Educational Development Authority Joint Powers Board (SEEDA)	Sheridan High Tech Park Ph-II Study	Reporting Period	4/7/2022	Planning	\$20,000.00	-	-	-	\$6,500.00	-	-	-	-	-
	Ranchester, Town of Sheridan Economic & Educational Development Authority Joint Powers Board (SEEDA)	Town of Ranchester Economic Development Plan	Construction	6/6/2024	Planning	\$75,000.00	-	-	-	\$25,000.00	-	-	-	-	-
		Sheridan High-Tech Park, Phase II	Construction	10/3/2024	Community Readiness	\$4,426,000.00	-	-	-	\$606,500.00	-	-	35	10,000	-
Sweetwater	Rock Springs Sweetwater County Airport Joint Powers Board	Southwest WY Regional Airport Terminal Modernization Grant	Completed	4/8/2021	Community Readiness	\$3,000,000.00	-	-	-	\$1,725,000.00	-	-	8.5	-	31,000
	Rock Springs Sweetwater County Airport Joint Powers Board	Southwest WY Regional Airport Terminal Modernization Continuation Grant & Loan	Construction	10/3/2024	Community Readiness	\$2,000,000.00	\$5,000,000.00	-	-	-	-	-	-	-	-
Uinta	Lyman, Town of	Lyman Elevated Living Assisted Living Facility Grant & Loan	Construction	2/2/2023	Business Committed	\$1,500,000.00	\$1,500,000.00	-	\$1,500,000.00	\$189,000.00	\$811,141.00	12	2.6	-	16,000
	Mountain View, Town of	Mountain View Economic Development Plan	Construction	6/6/2024	Planning	\$75,000.00	-	-	-	\$25,000.00	-	-	-	-	-
	Evanston, City of	Evanston 2050 Comprehensive Economic Development Master Plan	Construction	6/5/2025	Planning	\$100,000.00	-	-	-	\$87,500.00	-	-	-	-	-
Washakie	Washakie County	Washakie County Economic Development Master Plan	Construction	6/5/2025	Planning	\$75,000.00	-	-	-	\$25,000.00	-	-	-	-	-
Weston	Newcastle, City of	Newcastle Heritage Park Study	Reporting Period	4/7/2022	Planning	\$18,750.00	-	\$3,622.00	-	\$6,250.00	-	-	-	-	-
Total						\$86,003,080.00	\$20,426,288.00	\$24,133,637.00	\$178,501,683.00	\$14,437,963.00	\$29,837,699.00	567	957.64	132,600	450,881

## PROTECTING WYOMING'S ECONOMIC FUTURE

The Wyoming Business Council is proud of the ongoing regional successes shown in this report. Still, it is essential to acknowledge the risks our communities would face without this strategic support and **boots-on-the-ground leadership**.

Without the WBC's programs and services, the path to a diversified economy would face four critical barriers:

1. **Stalled Infrastructure:** Without the **BRC program**, major projects like the Southwest Wyoming Airport modernization, Lincoln County Sewer Project, or the Sheridan High-Tech Park would likely fail. Local tax bases cannot independently fund the infrastructure needed to **compete for industry and jobs** against neighboring states.
2. **Innovation Brain Drain:** Without **Kickstart, SBIR, and WYVC** funding, Wyoming's high-tech firms would be forced to seek capital outside the state. These programs are vital to ensuring our innovators keep their **jobs, intellectual property, and tax revenue** right here in Wyoming.
3. **Fragmented Local Leadership:** Without our **Regional Directors**, the essential link between state strategy and local action would be severed. Small-town administrations would lack the **coaching, strategic support, and know-how** needed to overcome local barriers to growth and secure complex funding opportunities.
4. **Vulnerable Small Businesses:** Without the collaborative reach of the **SBDC, WWBC, and Manufacturing Works**, thousands of local businesses would lose the technical expertise required to modernize, scale, and compete in a rapidly changing global market.

## THE MOMENTUM FOR RESILIENCE

The Wyoming Business Council is more than a source of grants; **we are the momentum** required to keep Wyoming competitive.

Without this proactive, regionally focused engagement, our communities risk losing the infrastructure, local capacity, and business diversity needed to move beyond the traditional boom-and-bust cycle. We look forward to continuing our partnership with the Legislature to secure a resilient economic future for every corner of the state.

