

CONTROLLED ENVIRONMENT AG

NO CORPORATE OR STATE INCOME TAX

NO INVENTORY, FRANCHISE, OCCUPATION OR VALUE-ADDED TAXES

LOW PROPERTY AND SALES TAX

WHAT IS CONTROLLED ENVIRONMENT AGRICULTURE?

Controlled Environment Agriculture (CEA) is a technology-driven approach to food production. Because CEA uses an enclosed growing structure, food producers are able to create favorable conditions and shield crops from environmental factors like disease and pest damage. Examples of CEA systems include indoor agriculture and vertical farming – a closed-loop system with controlled lighting, water, and ventilation.

WHAT ARE THE BENEFITS OF CEA?

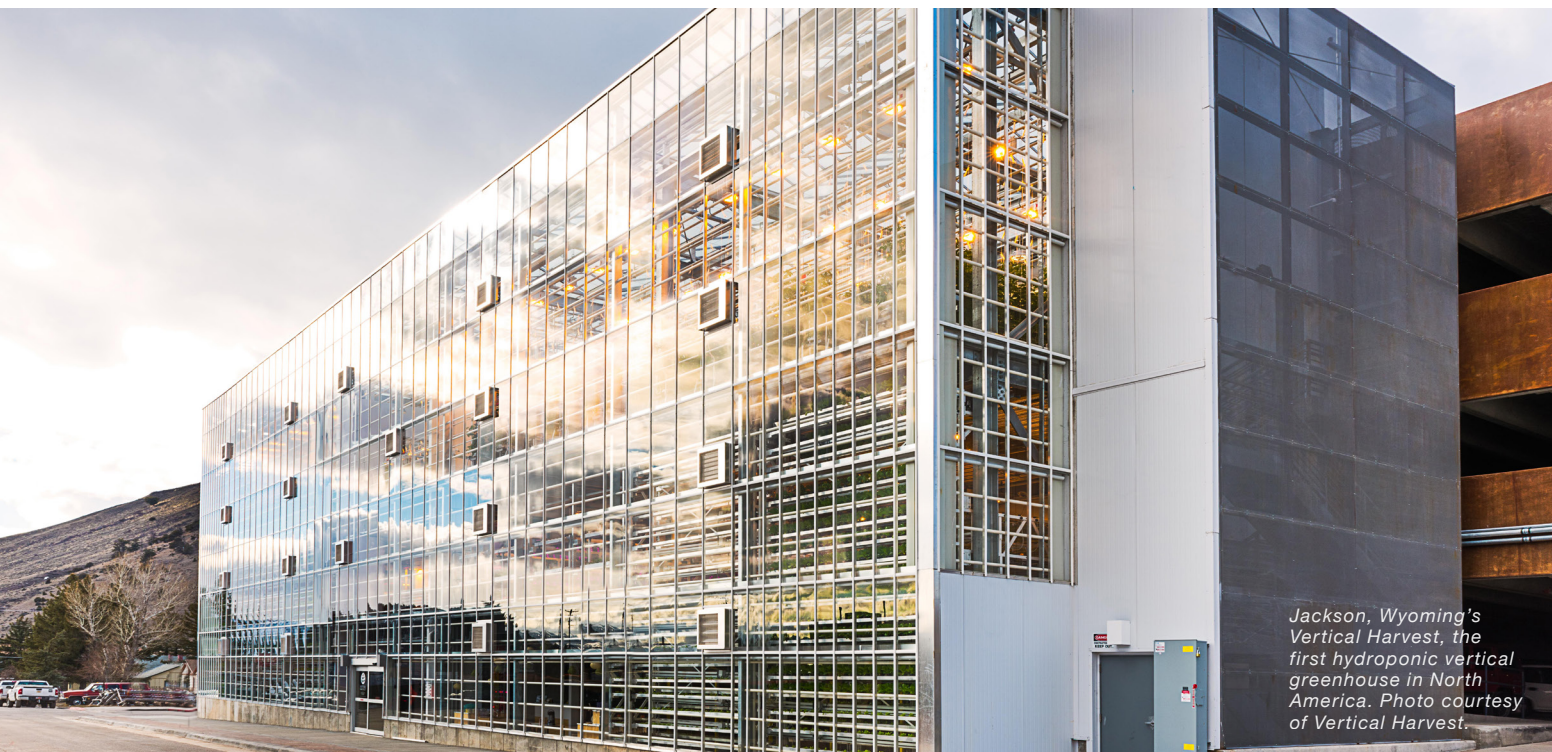
CEA is able to eliminate the volatility of food production due to unpredictable weather, soil degradation, and diminishing resources. By controlling the temperature, humidity, light, nutrients, and pests, CEA is able to produce food regardless of climate or season.

COMPLEMENTARY INDUSTRIES

Controlled Environment Agriculture works closely with a variety of industries like robotics, lighting manufacturing, plant sciences, farm tech, startup tech companies, and finance, to name a few.

WHY WYOMING?

Wyoming is an exceptional place for research and development because of its environment and shorter growing season. Plenty LLC has plans to build the largest indoor vertical farming research and development center in Laramie, home to the University of Wyoming (UW), positioning the region to be the leader in CEA.



FEATURED BUSINESSES & PROGRAMS

PLENTY UNLIMITED INC.

After spending nearly a decade advancing the emerging technology field of indoor agriculture, Plenty Unlimited Inc. announced in 2023 it would build the world's largest and most advanced vertical farming research center in Laramie, Wyoming. According to Plenty CEO Arama Kukutai, "Creating this new center of excellence greatly expands Plenty's ability to transform indoor agriculture."

VERTICAL HARVEST

Located in Jackson Hole, this vertical, three-story greenhouse was the first of its kind in the Northern Hemisphere. With six years of multi-crop growing expertise, they distribute to more than 80 grocery stores and restaurants in three states, 365 days a year, at the peak of nutritional and taste value.

UNIVERSITY OF WYOMING

UW offers a wide range of both undergraduate and graduate degrees and majors through seven colleges and multiple interdisciplinary programs and departments. With 14 colleges ranging from the College of Agriculture, Life Sciences and Natural Resources, to the School of Energy Resources, to the College of Business, there is a plethora of students, researchers, and professionals who are working closely with the CEA industry in the areas of innovation and research and development.

SUPPORT & TRAINING

In addition to the University of Wyoming, there are seven community colleges located across the state, all of which work closely with local businesses to create programming that aligns with the needs of agribusiness, farm and ranch management, and beef production.

The Wyoming Asia Pacific Trade Office (WAPTO), housed in the Taipei World Trade Center, connects producers in Wyoming to food buyers in the Asia Pacific Region. As a direct result, Wyoming beef, distilled spirits, beer, and cereal products can now be purchased throughout Taiwan.

RICH CULTURE

Wyoming enjoys easy access to year-round recreation opportunities and wide open spaces. Here, the great outdoors and economic opportunity go hand-in-hand, making Wyoming home to a burgeoning agri-tourism industry.

TRAINING A SKILLED WORKFORCE

The Wyoming Workforce Development Training Fund awards grants of up to \$5,000 to each employee every year. Find out more by visiting dws.wyo.gov/dws-division/business-training-support-unit/workforce-development-training-fund