

Wind Energy



Wind companies have invested in
\$5 BILLION IN WYOMING¹

**50% OF THE BEST
QUALITY** wind capacity in the
continental United States is located in
Wyoming on shore before wind capacity²

3RD LARGEST amount of wind power
generating capacity in 2020³

¹ <https://cleanpower.org/>
² <https://windexchange.energy.gov/states/wy#capacity>
³ <https://www.eia.gov/state/analysis.php?sid=WY#108>

LOW TAX BURDEN

NO corporate or personal state income tax
NO inventory tax
NO franchise tax
NO occupation tax
NO value-added tax

Wind in Wyoming

Energy Leader

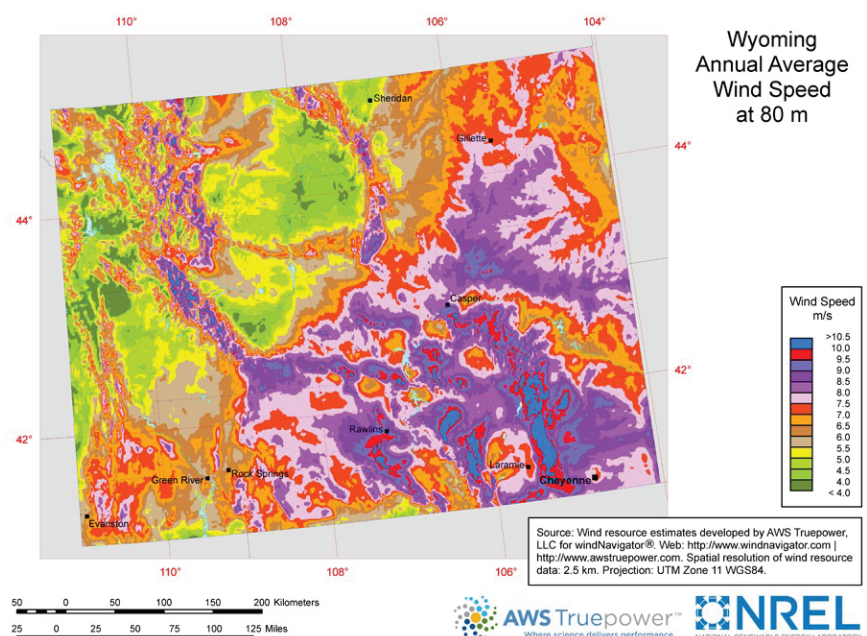
With an abundance of natural resources, Wyoming is known as the “Energy State,” and for good reason. Wyoming consistently ranks high in traditional, emerging, and renewable energy sources, including wind. The “Energy State” was named first of 11 states in the Mountain West and Pacific Northwest regions by the National Renewable Energy Laboratory (NREL) for Developable Nameplate Wind Power Production by Class.

Business Environment

With a tax climate extraordinarily favorable for business, higher education programs to develop a workforce skilled in wind energy technology and wind resources consistent with utility-scale production, Wyoming is poised to be a leader in the wind power industry.

Potential

There are 8 gigawatts (GW) of proposed and under construction wind energy in Wyoming, and 472 GW of technologically possible capacity. The proposed 8 GW is enough energy to power almost 6 million homes, 20 times the number of households in Wyoming.



Wyoming's Wind Projects

7,263 MW

OF PROPOSED/PLANNED INSTALLATION⁴

⁴ <https://eersmap.usgs.gov/uswtodb/viewer/#6.6/43.036/-107.557>

CHOKECHERRY SIERRA MADRE WIND ENERGY PROJECT

Currently under construction in Carbon County, Wyoming, this project will be the largest single wind power project in North America, and one of the largest in the world. The project is designed to have a nameplate capacity of at least 3,000 MW and is estimated to produce enough clean electricity to power approximately 1 million households, resulting in a reduction of CO₂ emissions of 7 – 11 million tons per year.

ROCKY MOUNTAIN POWER

Rocky Mountain Power's Energy Vision 2020 is a 20-year plan that helps a new energy future. The \$3.1 billion investment includes:

- Upgrading existing wind fleet with a larger blade and newer technology
- Adding 1,150 MW of new wind resources in addition to the 2,750 MW already installed
- Building a new 140-mile Gateway West transmission segment in Wyoming to enable additional wind generation.

TRANSWEST EXPRESS

The Transwest Express is a high-voltage interregional transmission system extending about 730 miles from central Wyoming to southern Nevada, with an interconnection into the Intermountain Power system. The use of both HVDC and HVAC technology, along with the midpoint terminal, will increase the flexibility and physical transmission capacity of the Western U.S. power grid. A critical energy infrastructure, it provides Western electricity markets with brand-new, direct access to the geographically diverse, complementary, high-capacity wind energy supplies available in Wyoming.



MANUFACTURING SALES TAX EXEMPTION

The sales tax burden is exempt on the sale or lease of machinery to be used in the State of Wyoming directly and predominately in manufacturing tangible personal property. In addition, power or fuel purchased for manufacturing or agriculture is exempt from sales tax when consumed directly in the manufacturing process.

Learn more about Wyoming's wind energy at www.WhyWyoming.org

Wendy Lopez
Business Recruitment Manager
Wyoming Business Council
wendy.lopez@wyo.gov | 307.777.2806

Anja Bendel
Program Director
Wyoming Energy Authority
anja.bendel@wyo.gov | 307.635.3573